



TONE WINNER

A large, stylized letter 'T' graphic is positioned on the left side of the page. It is filled with a pattern of diagonal gray and white stripes. The 'T' is composed of a horizontal top bar and a vertical stem that tapers slightly towards the bottom.

**AD-99D
User Manual**

ISO9001 Certified Enterprise



Product packing list

Number	Item	Quantity
1	Manual	1 pcs
2	Power Line	1 pcs
3	Certificate of qualification	1 pcs
4	Remote control	1 pcs

Pollution Control Sign and Content Description

The symbol indicates that the product can be reused. The figure indicates the term of service of environmental protection. The product will not cause environmental pollution or affect human body and property within the term of service expressed by the figure since the date of manufacture as long as the safety and operating precautions on the product are obeyed.



Name and Content of Toxic or Harmful Substance or Element in the Product

Name of Parts	Toxic or Harmful Substance or Element					
	Lead (Pb)	Mercury (Hg)	Cadmium (Cd)	Hexavalent chromium (Cr)6-	Polybrominated (PBB)	Biphenyls polyphenyls (PBDE)
Body/Box	○	○	○	○	○	○
Equipped Baseplate/ Electrical Part	×	○	○	○	○	○
Plastic Structural Member	○	○	○	○	○	○
Metallic Structural Member	○	○	○	×	○	○
Cable	○	○	○	○	○	○
Transformer	○	○	○	○	○	○
Transformer Loudspeaker/ Microphone	×	○	○	×	○	○

Marks:

“○” means the content of the hazardous toxic substance is lower than SJ/T11363-2006 standard required.

“×” means in a homogeneous material of the component the content of the hazardous toxic substance is higher than SJ/T11363-2006 standard required.

Note: “×” as there are no substitutable substances under the existing technology

Thank you for using our audio products. With the philosophy of “high technology, high quality and high taste”, we make products with durable materials, exquisite technique, rigorous circuit & advanced technology and offer professional service!

Contents

Important Protective Measures for Attention-----	2
Instructions Prior to Use-----	4
Product Introduction-----	5
Front Panel-----	6
Rear Panel-----	8
Remote Control-----	10
VOL/MENU-----	11
USB Disk/TF Card-----	12
Mobile Phone Wireless Transmission-----	12
Computer USB Audio Playback-----	12
Digital Audio Playback-----	12
Mobile Phone App-----	13
Precautions-----	14
Specification-----	16
Equipment Safety Standard-----	17

Important Protective Measures for Attention

	WARNING ELECTRIC DANGER DO NOT OPEN		To reduce risk of electric shock, do not remove the outer cover (or rear panel). For maintenance, it should be carried out by qualified maintenance people. To avoid fire and electric shock hazards, do not get the unit wet or damp. Equipment safety standard : Class II
---	---	---	--

- 1 Read the protective measures: read all warning messages about protection and operation in the instructions carefully before using the equipment.
- 2 Follow instructions: please follow the instructions and do not violate the instructions.
- 3 Place the product on where manufacturer recommends: to avoid overturning, do not push too hard or suddenly stop when moving.
- 4 Keep away from water and moisture: do not place equipment near water such as bathtub, basin, sink, washing machine, etc. Do not use equipment at high temperatures or high humidity environment, such as a damp basement.
- 5 Cleaning: do not use liquid or mist cleaners. Please use dry cloth to clean. Turn off the machine and power off before cleaning the equipment.
- 6 Power supply: use the power supply according to marks and tags. Connect and place the wires properly. Do not step on wires to avoid damage. Pay special attention to wires to plugs, receptacles and connecting ports.
- 7 Ventilation: the cabinet of equipment is designed with venting holes. To ensure reliable performance, please avoid overheating and do not cover the equipment. Do not use the equipment on beds, sofas, carpets etc.
Newspapers, tablecloths, curtains, and other objects may block venting holes. Do not put the equipment close to window curtains. If it is put in devices such as bookcase and rack, please pay attention to the ventilation and cooling. Keep a distance of 10cm (4") on left, right, top and rear sides. Equipment bracket or rear of top cover should have a distance of 10 cm (4 ") to rear panel or the wall, to keep venting space.
- 8 Keep away from heat: do not put that machine near heat sources, such as radiators, stoves and other objects that generate heat (including power amplifiers).
- 9 Prevent unknown objects or liquids - objects or liquids should be prevented from falling through the holes into the equipment, because it might contact with current or live parts that might cause fire or electric shock. Do not place the equipment in rain or water splashing place. Do not put water containers such as vases on top of it.
- 10 Please connect well all input/output wires before switching on.
- 11 Thunder and lightning: unplug the power cable in thunder and lightning weather because it can effectively prevent lightning impulses to protect the equipment.
- 12 Protections: unplug the machine when you do not use it for long period. Good grounding can prevent the machine from being damaged.

- 13 Maintenance: do not open the cabinet without professional instruction to avoid electric shock. Contact with the product managers where you buy this machine in the following cases:
- a) Unknown parts or liquid enter the machine.
 - b) The machine is soaked.
 - c) The machine works abnormally.
 - d) Machine falling or damage.

- 14 Battery: for environment protection, please dispose batteries in appropriate ways.

- 15 Disconnection device of main power supply: this machine use power plug and coupler as the disconnecting devices. Power plug and coupler should be easily operated.

- 16 This product is only suitable for safe use in altitude below 2000m.



- 17 This product is not suitable to be used in tropical climates.



Instructions Prior to Use

■ General matters

- 1 Please place the machine at the well-ventilated place with accessible space 10 cm in width at its two sides, and above and behind it.
- 2 Don't apply oil, chemical solvent, volatile oil, paint or pesticide to the equipment.
- 3 Don't place the equipment in moist environment with the temperature being as high as above 60°C or extremely low.
- 4 Please keep the equipment away from direct exposure to sunlight, strong magnetic field, high temperature and electrical devices (computer, fax machine, etc.) which may cause interruption.
- 5 Please fixate the power socket when pulling out the power plug.
- 6 Do not open the cabinet without professional instruction to avoid electric shock. Contact with the product managers where you buy this machine for internal maintenance.
- 7 Please place the machine on flat, smooth and stable surface without vibration. Do not put things on top of the machine.
- 8 If there is no sound output, please turn off the machine and trun it on in 10 seconds.
- 9 Do not use the machine during a flashing lighting or thunderstorm. Pull out the plug for safety.

■ Warning

The voltage used for the machine must be consistent with that in the specifications. We assume no responsibilities for fires or other accidents due to the wrong use against the scope as specified.

■ Remark

- 1 Please note that you'd better only put audio files you want to play in the TF card or USB disk before you connect them.
- 2 If Bluetooth isn't working, please restart the machine.

Product Introduction

AD-99D is a medium-high class Hi-Fi amplifier which combines ToneWinner's 30-year experience in Hi-Fi product design and long-term technology accumulation. The 1st generation AD-99 sold well at home and broad, and the 2nd generation was customized for European market, both of which have been popular for more than ten years. Now the 3rd cost-effective generation AD-99D is hitting the market, with durable materials, elegant outer design and professional circuits to offer rich sound.

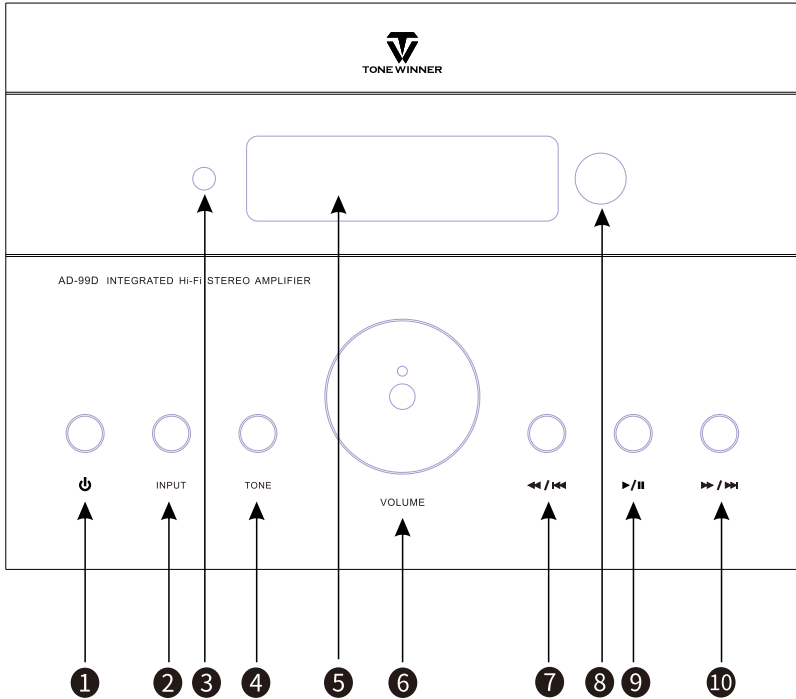
Overview of Functions

- Support 128G USB disk, TF card and lossless music formats including WAV, FLAC, APE.
- Lossless Bluetooth transmission for mobile phone, tablet PC & PC supporting Bluetooth.
- Support PC USB Audio input, which can be used as external sound card.
- Support HDMI ARC connected with TV.
- 1 way optical input, 3 way coaxial inputs, PCM decoding.
- 3 way analog inputs, 1 way for amplifier in.
- Support SW-OUT which can be connected with an active subwoofer.
- Separate circuits for preamplifier and amplifier controlled by U-shape short circuit ring.
- Support treble and bass adjustments.
- Mobile phone App or remote controlling.
- Manual operation or trigger in/out design for switching on.

Overview of Features

- Class A circuit for high fidelity, low distortion and high efficiency.
- High voltage for preamplifier and slightly low voltage for amplifier to optimize sound quality.
- Separate 5-chamber internal layout for less interference of free electromagnetic waves.
- 550VA quality ring transformer, 69400 μ F customized capacitor and high power transistors for paralleled output work together to offer powerful current output.
- 200W/8 Ω per channel output, robust enough to drive high power speakers.
- Multiple circuit protection design including short circuit, overheat, high frequency and direct current protection.
- Bright & clear treble, bloat & analytical mid-range and sonorous bass with wide low frequency.

Front Panel



1 Power switch

Connect the mains electricity and press to start the machine. Press again to enter Standby mode.

2 INPUT

Press the button for loop selection of input channels.

3 Standby indicator

The machine is in standby mode when the light is on.

4 TONE

Press the button to select the options among Balance, Treble, Bass, etc. and then turn the Volume knob to change the parameters.

5 Display screen

It is an 8-bit precision lattice VFD display screen. The left part is an audio source display area and the right is the parameter of the volume display area. The luminance of the screen can be adjusted into 10 levels from DIM OFF to DIM 10. You can press INPUT button on the front panel to choose SET DIM, or DIM button of the remote to adjust the brightness.

⑥ VOLUME

Turn the knob to adjust the volume or parameters.

⑦ Previous/Fast-reverse

Short press to play the previous song. Long press to make the song fast-backward.

⑧ Remote control receiving window

This is for receiving signal, before which there can't be any obstructions so that the window can receive signals successfully.

⑨ Play/pause/mute/menu

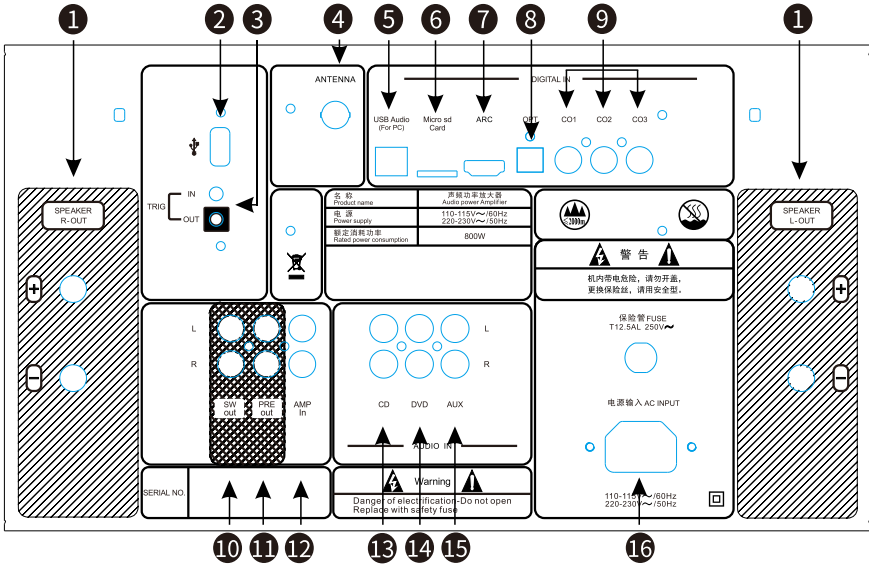
In the condition of USB disk/TF card/BT, short press this button to pause or play the audio.

In the condition of other audio sources, short press this button to mute or unmute the audio.

⑩ Next /Fast-forward

Short press to play the next song. Long press to make the song fast-forward.

Rear Panel



1 Speaker output

L-OUT: Left channel speaker output. Connect the "+" to the positive/red terminal of the speaker; Connect the "-" to the negative/black terminal of the speaker.

R-OUT: Right channel speaker output. Connect the "+" to the positive/red terminal of the speaker; Connect the "-" to the negative/black terminal of the speaker.

2 USB port Support 3.0 USB and backward iterations.

3 Trigger in/out

4 ANTENNA (Bluetooth antenna)

5 PC Audio

6 TF card input

7 ARC audio input

Connect TV supporting ARC to this port to play the audio from TV.

8 1 way optical input (supporting 24bit 192 kHz)

9 3 way coaxial inputs (supporting 24bit 192 kHz)

10 SW-OUT subwoofer output

Connect active subwoofer to this terminal; there is no signal in this terminal when the machine is muted.

11 PRE OUT pre-amplifier output

“PRE OUT” and “AMP IN” are connected by a short circuit ring to make signals of this machine; when the short circuit ring is detached, any signal input by any terminal won’t work.

12 AMP IN amplifier input

“PRE OUT ” and “AMP IN ” are connected by a short circuiting ring to make signals of this machine. If you want to use this machine as a dependant amplifier, you can detach the short circuit ring, and input signals can go through the “AMP IN” terminal. Please refer to the 6th point of precautions in Page 15.

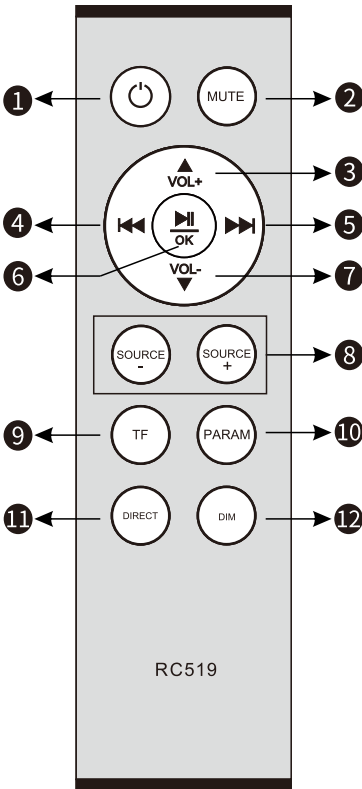
13 CD input

14 DVD input

15 AUX input

16 Power supply

Remote Control



1 Standby

2 Mute

Mute button for most modes.

This button is for pause when a USB disk, TF card, Bluetooth is inserted or connected.

3 VOL+/parameter+

Turn up the volume/increase the parameter.

4 Last/fast-reverse

Short press to play the previous song.

Long press to make the song fast-backward.

Only works when a USB disk or TF card is inserted.

5 Next/fast-forward

Short press to play the next song.

Long press to make the song fast-forward.

Only works when a USB disk or TF card is inserted.

6 Play/pause

Play or pause the audio.

Only works when a USB disk, TF card or Bluetooth is inserted or connected.

7 VOL-/parameter-

Turn down the volume/decrease the parameter.

8 Source+/- keys

Press these two buttons to select an input source to playback.

9 TF card source

Select a source of TF card to playback.

10 PARAM

Choose sources among BASS, TREBLE & BALANCE, and press VOL+ or VOL- to adjust the corresponding parameters.

11 DIRECT

Enable/disable the direct playback mode.

12 DIM

Adjust the brightness of display screen.

VOL/MENU

Normally, the VOLUME knob of the front panel and VOL buttons of the remote are used to adjust the volume. They can also be used to adjust parameters.

Detailed instructions of adjusting parameters

Long press the "▶/||" button on the front panel for 5s and it will go into the menu. Turn the VOLUME knob or press the volume buttons to select parameters among INPUT, BALANCE, BASS, TREBLE, SETDIM, RESET, INFO, etc. Turn the VOLUME knob, select RETURN and press the "▶/||" button to go back to the MENU, or select EXIT to directly go back to the home interface.

The MENU functions are as follows:

INPUT (audio source selection): CD input->DVD input-> AUX input->CO1 (coaxial input1)->CO2(coaxial input2)->CO3 (coaxial input3)->OPT (optical input)->BT (Bluetooth)-> TF ->RETURN (return to the last layer)

BALANCE (balance adjustment): range: L10---0dB---R10
RETURN

BASS (bass adjustment): range: -10dB----0dB----+10dB
RETURN

TREBLE (treble adjustment): range: -10dB----0dB----+10dB
RETURN

SET DIM (VFD display screen luminance adjustment): DIM OFF--DIM10
RETURN

RESET: YES (reset confirm)
RETURN

INFO (version information): VER 01
RETURN

EXIT (return to the home interface)

Short press to directly go back to the home interface.

Or wait for 15s without any operation and it will automatically return to the home interface.

USB Disk/TF Card

(1) Insert the USB disk with downloaded songs into the USB port in the rear, press the front panel button INPUT or use the remote to select USB audio source, and then songs will auto-play.

(2) Insert the TF card with downloaded songs into the slot in the rear, press the front panel button INPUT or use the remote to select TF audio source, and then songs will auto-play.

(Note: Songs will auto-play only after they are listed in the same file.)

Mobile Phone Wireless Transmission

(1) Use the front panel button INPUT or the remote to select the audio source BT.

(2) Switch on Bluetooth on your mobile phone, search & pair-connect with AD-99D, and you can control music play on your mobile phone.

PC USB Audio Playback

This machine supports the PC audio transmission with the sampling rate of 24 bit 48kHz (driving-free).

Use a USB cable to connect the USB Audio port on the rear panel with the PC USB port.

Turn on the music playing center on PC and select USB Audio. Press the front panel button INPUT or use the remote to select PC audio source.

Digital Audio Playback

This machine supports the digital input with the sampling rate of 24bit 192kHz.

Press the front panel button INPUT or use the remote to select the audio source OPT or CO1/CO2/CO3.

Mobile Phone App

For better user experience, ToneWinner has developed its own App to match its products, and you can finish all above operations and switches on your mobile phone. For the first time to use ToneWinner App, please follow step 1, 2 and 3. Later you just need to follow step 4.

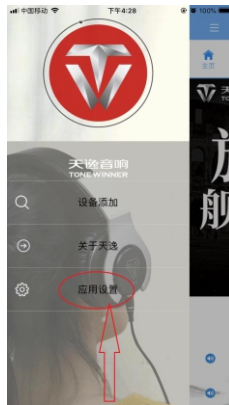
- (1) Keep your phone on normal working status and with internet access.
- (2) Go to <http://www.tonewinner.net/> to download the ToneWinner Music App and install it.

For IOS system, search "ToneWinner Music" on App store to download and install.

- (3) Enter the App, search AD-99D, and connect to it.
- (4) To set the App language into English, follow the four steps:



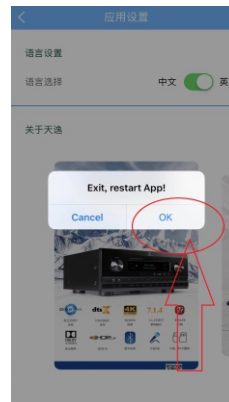
1. Click = on top left



2. Click "应用设置" Setting



3. Select language



4. Click OK and the App will auto-restart.

- (5) For more App details, please check on our websites.

Precautions

- 1 Place this machine in well ventilated areas because this machine is a high power amplifier which will generating heat inside. So good environment for heat release is required to ensure safe performance. Don't place this machine in narrow and airtight areas and don't put objects on the top of this machine to keep the venting hole unobstructed. If the machine can't release heat well, the service life may be affected, or even the machine will burn down.
- 2 Don't make the machine under the overload condition for a long time: don't set the volume too high or make this machine under the overload condition of peak distortion such as the circuit protection condition. Please check the machine if it is too hot, and if it is too hot, start the machine after it cools down.
- 3 Match of this machine and the speaker: This machine has good capacity to match with speakers, and can match more than 95% home speakers. But there is still something you need to pay attention to when you select speakers:
 - (1) Too low impedance of the speaker is not suitable for this machine, and you'd better not choose the impedance of less than 4Ω . The machine performs best when the impedance is $4\sim 8\Omega$, especially 8Ω .
 - (2) Too low sensitivity of the speaker is not suitable for this machine and you'd better not choose the sensitivity of less than 86dB. The machine can perform well when the sensitivity is over 87dB.
- 4 There are 10 levels of luminance you can select, from DIMOFF to DIM10. You can select the luminance level you like by pressing the "▶/||" button on the front panel to select SETDIM or the DIM button on the remote control.
- 5 The connection line connected to the machine must be reliable and accurate, and please don't mix up the positive & negative terminals or the left & right channels.

- 6 You can input signals separately from the "AMP IN" after detaching the short circuit ring from the "PRE OUT" to the "AMP IN". At that time, this machine will be used as a dependant post-amp, when the input signals and the volume adjustment won't work and you need to use the volume knob of the pre-amp to control the volume.

(Please note that when the machine is used as a post-amp, pay attention to the order of the start and stop of the audio source, the pre-amp and the power amplifier. Start the audio source, the power supply of the pre-amp, and then the power supply of this machine one after another when starting. Turn off the power supply of this machine, the audio source, and then the power supply of the pre-amp one after another when switching off. If you don't follow this, the loud popping sound may damage the speakers.)

Specification

Model: AD-99D

SN: >100dB/ A weighted

Frequency response: 10Hz-90kHz (+1/-3dB)

Distortion: ≤0.01% (1kHz,A weight)

Output power: 120W/8 Ω per channel, 1kHz, THD=1%

Input impedance: 10K

Matched impedance: 4-8Ω

Gain:42dB

Max power consumption:600W/8Ω

Supply voltage: 110-115V~/60Hz or 220-230V~/50Hz

Net weight: 24.1kgs

Gross weight: 26.9kgs

Unit size: 445×456×218mm

Package size: 550×550×318mmmm

Executive standard:GB8898-2011,GB/T9254.1-2021,GB17625.1-2012

Equipment Safety Standard: Class II

- 1 Please read the manual and safety precautions carefully before using.
- 2 The product should be mounted somewhere ventilated and dry for the convenience of heat dissipation to avoid moisture and lampblack.
- 3 The safety standard of the machine is II; upon installation, the power plug should be connected to 110-115V~/60Hz or 220-230V~/50Hz grid.
- 4 Do not remove the cover during using to prevent electrocution.
- 5 Do not frequently turn it on or off. Wait a few minutes before turning it on again.
- 6 When the equipment fails, contact with the product managers where you buy this machine for internal maintenance. To avoid accident, do not open the rear cover for inspection or repair.
- 7 The plugs, power lines, fuses, power switch, and transformer used on the equipment are all safety parts. Upon change of safety parts, the maintenance department should replace them in accordance with the model and specification specified by our company.

The specification of the product may be changed without further notice.



Scan QR code

Guangzhou Tonewinner Electronics Co., Ltd

Tel.: 86-020-34797660/34796146

Web: <http://www.tonewinner.com>

Alibaba Web: <https://gztonewinner.en.alibaba.com/>

Address: NO.1, Hongsheng 3rd Road, Dashi Street,
Panyu District, Guangzhou, 511430, China